

DATA STATUS UPDATE

Stay up to date on Delaware's transportation data! Brought to you by the Integration of Operations and Planning Advisory Committee.

PROGRAM PILLARS OF INTEGRATION OF OPERATIONS AND PLANNING

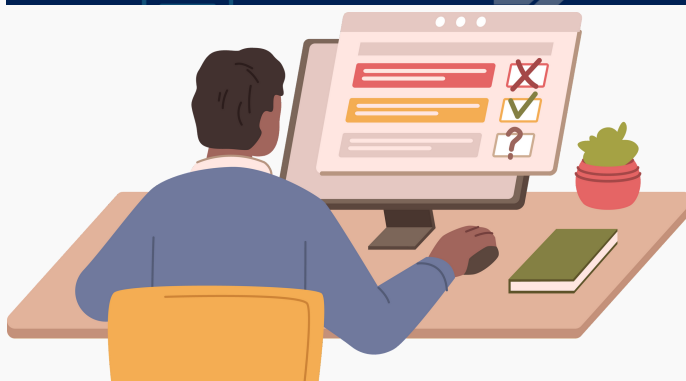


1. New Technologies
2. Data Collection & Access
3. Data Applications
4. Public Education

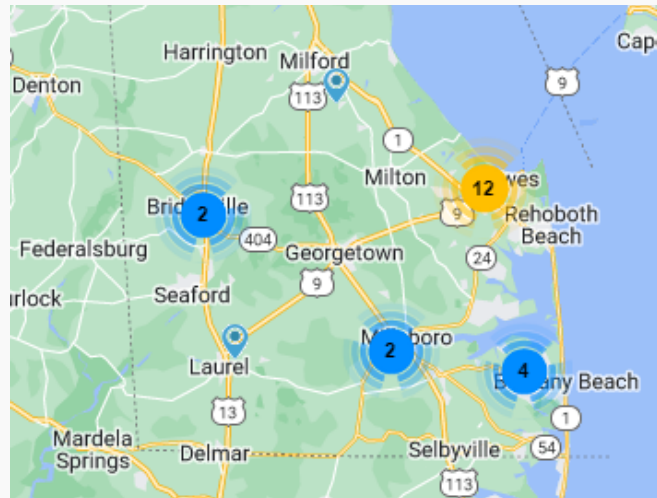
PUBLIC INPUT SOFTWARE

DelDOT's mission is to provide excellence in transportation through every trip, every mode, every dollar, to everyone. But how does DelDOT know what *everyone* needs? Gathering public input! Whether it's federally required for a project or you are simply trying to build relationships within the community, public input surveys can be an efficient way to better understand the area's needs.

Through [DelDOT's Interactive Hub](#), project managers can consolidate all information into one project portal, providing a contact email, phone number, and customizable URL, creating a one-stop shop for members of the public, all for free.



A concerned citizen can go to the Interactive Hub and see at a glance all active DelDOT project portals, with a brief description of each. After selecting a specific project, they can then view upcoming events and project schedules, complete surveys, subscribe for updates, reach out via a designated email, or interact with any other information provided.



Source: Public Input screenshot of survey result location map.

Engagement and survey results can then be summarized into auto-generated reports, giving DelDOT a concise overview of the responses. Maps like the one above show where viewers/participants are from, allowing clients to refocus and target underrepresented areas.

Interested but not sure where to start?

DelDOT offers free public input software trainings providing instruction on how to create surveys, analyze maps, access emails, and more, with certificates presented upon training completion.

Reach out to Austin Gray at Austin.Gray@delaware.gov to find out more. Additional trainings and more information are also available at the [Public Input Knowledge Base](#).

To continue the conversation, contact Beth Hermansader at Beth.Hermansader@delaware.gov

IN OTHER NEWS...

- DelDOT is in the process of updating their Long-Range Transportation Plan (LRTP), estimated to be complete by the end of 2024. The LRTP, titled Connecting Everyone Everywhere is a policy-based plan that will identify broad goals, policies and priorities that will serve as a framework for shaping DelDOT's multimodal transportation investments and decision-making over the next 20 years. Want to make your voice heard? Send the LRTP team an email at DOTPlan@delaware.gov or check out the [LRTP website](#).